

TWO TANK CONTROLLER

For Single / Multiple Pumps

An intelligent dual-tank automation system engineered for seamless sump and overhead tank management. Featuring automatic operation, dual-level sensing, and alternating pump functionality, it delivers dependable performance for residential, commercial, and industrial water systems.



ACCURACY YOU CAN RELY ON

VARIANTS

मोटर रक्षक

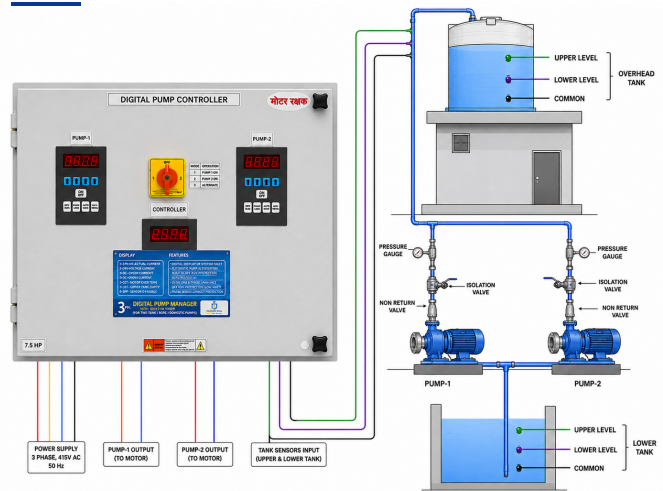
THE ULTIMATE PROTECTION FOR YOUR PUMPS



SMART CONTROL AT YOUR FINGERTIPS



SYSTEM DIAGRAM



FEATURES



Single Unit with Starter, Protection & Automation



Digital Display for Faults and Parameters



Drastically Enhances System Life



Easy to Install, Operate & Maintain



Highly Accurate & Reliable



Multipump Models with Auto Change over Available